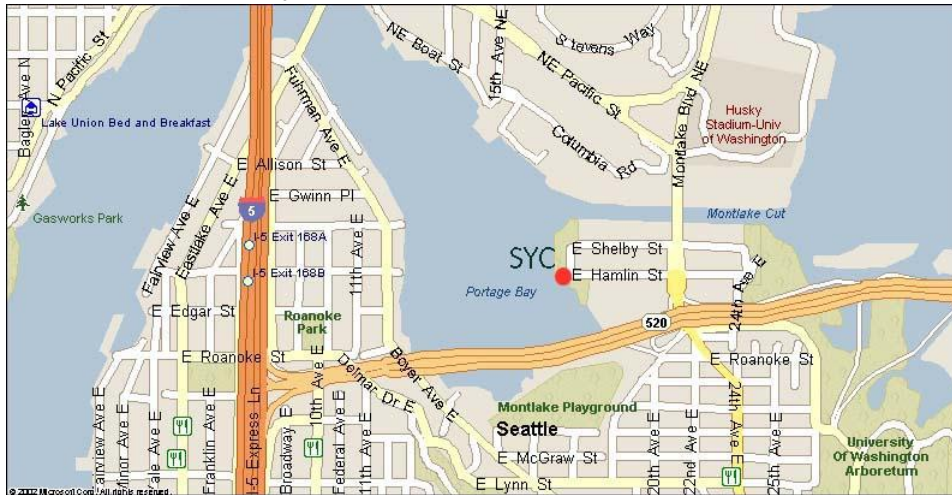


SEATTLE AREA SAILING VENUES

Seattle Yacht Club, 1807 East Hamlin St.



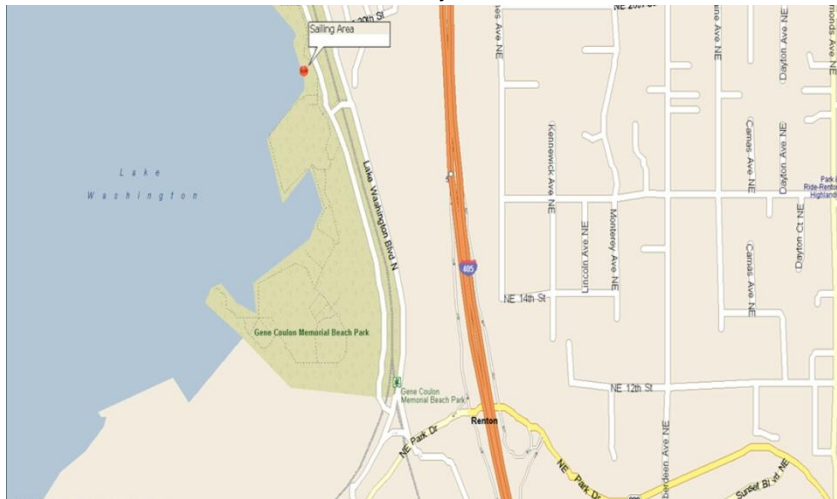
Take SR 520 exit from I-5. Go east across Portage Bay and take the first exit, Montlake Blvd. Left at the light, keep to the left and take the first left on to East Hamlin Street. SYC is on the left at the end of Hamlin St.

Lake Union Model Boat Pond



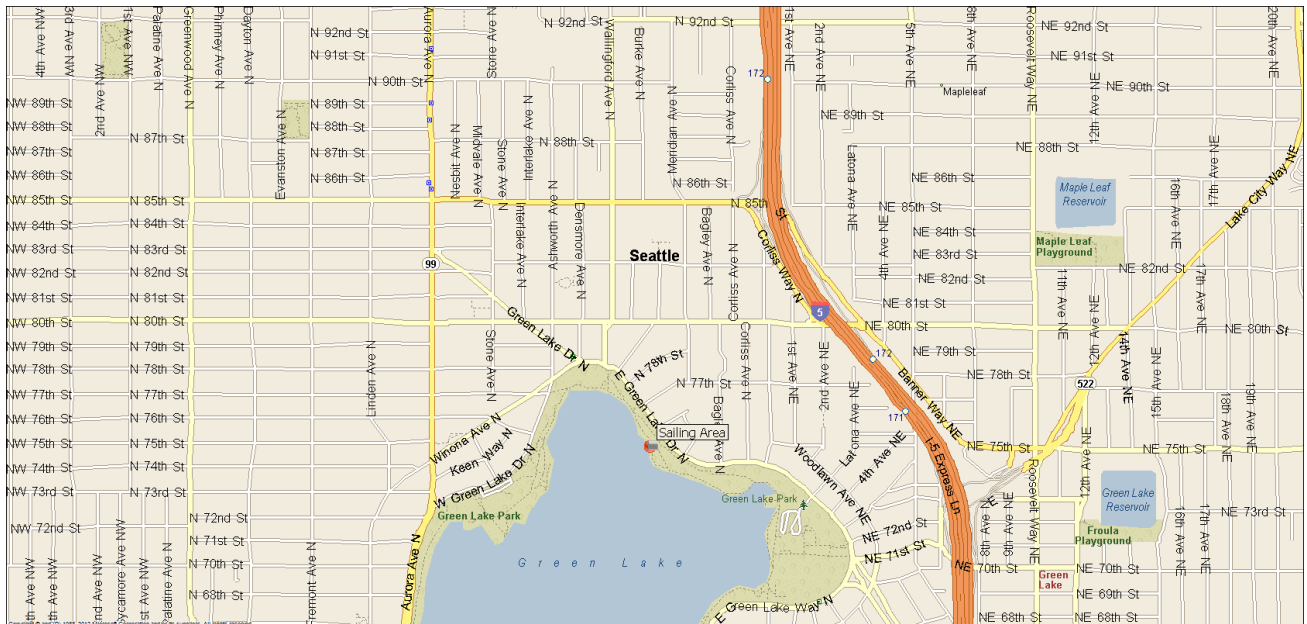
From I-5, take the Mercer exit. Proceed west to Terry and turn right to the small metered parking area for Center for Wooden Boats and MOHAI. Or turn north on Westlake and park in the lot on the lake side just north of the foot bridge to the pond and by Kenmore Air. Parking in this lot is free on Saturdays.

Gene Coulon Memorial Park, Renton



From I-405 take exit 5 to NE Park Drive. Take Park west toward the lake. Take the first right at the bottom of the hill onto Lake Washington Blvd N. Take the next left into Coulon Park. Continue northbound parallel to Lk Wash. Blvd passed the swimming beach and boat launch. Sailing area is just north of Ivars and Kidd Valley restaurants. 2hr parking south of the restaurants, no limit on time in parking to the north.

Green Lake



From I-5 take exit 172 to N 85th going west. Take a left on Bagley Ave. N., jog to left at N80th and continue south to E Green Lake Drive then turn right. Park anywhere between Bagley, Orin and 77th. Walk across Green Lake Dr. to the shoreline.

Bellevue Downtown Park



From I-405 North or Southbound, take exit to NE 4th St.. Proceed west to Bellevue Way NE. Turn left, then right on NE 2nd. 2nd curves to left (south) and becomes NE 1st St. Turn right at first stoplight into parking area next to pond.